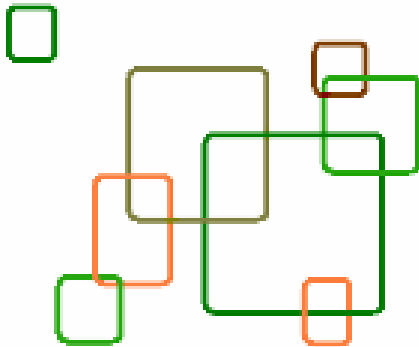


*...voluntary agencies working together to improve service delivery in mental health*

# ANNUAL REPORT

2007 – 2008



Office: Suite 3F  
East Mill  
Bridgefoot  
Belper  
Derbyshire DE56 2UA

Telephone: 01773 599995  
E-mail: [info@sdvsmhf.org.uk](mailto:info@sdvsmhf.org.uk)  
Website: [www.sdvsmhf.org.uk](http://www.sdvsmhf.org.uk)

Registered Charity No: 1099282

**Contents**

---

<b>Chair's Report</b>	<b>1</b>
<b>Executive Committee Membership</b>	<b>2</b>
<b>Staff</b>	<b>2</b>
<b>SDVSMHF - Organisational Development</b>	<b>3</b>
<b>Partnership Working – Representation</b>	<b>5</b>
<b>Partnership Working – Policy and Practice</b>	<b>9</b>
<b>Forum Focus on ....Busy Market Place!</b>	<b>13</b>
<b>Audited Accounts 2007 – 2008</b>	<b>17</b>
<b>Note on Reserves</b>	<b>22</b>

## **Chair's Report**

---

To say my second year as Chairman of Southern Derbyshire Voluntary Sector has been 'interesting' would be a major understatement.

In the past year we have been building an expanded team both at governance and operational level, to establish the vision and strategy of Southern Derbyshire Mental Health Voluntary Sector Forum and then to ensure we can work towards achieving that vision. These new developments include a new Training and Development post funded with the generous support of Amber Trust and Derbyshire County PCT, and we will continue to support the development of the Delivering Race Equality agenda. Both of these are new initiatives for the Forum. These new projects will take a time to successfully establish but we believe they build on the excellent work that Southern Derbyshire Mental Health Voluntary Sector Forum has become renowned for with regard to the voluntary sector mental health agenda. It will also enable us to champion the voluntary sector engagement in relation to all the changes and opportunities that are coming about as a result of the changing statutory agendas and the development of Derbyshire's Mental Health Services towards Foundation Trust status.

With the increase in activity we have, rather inevitably, been placing a significant burden on our small staff team. I would like to pay tribute specifically to Angela Kerry. We continue to benefit enormously from her huge knowledge and experience in this field, but also her considerable enthusiasm and dynamism in this role. And I would like to say a special 'thank you' to my fellow executive members. As Chair I have asked a tremendous amount of them over the past year and I know at times taken them outside of their already busy jobs. They have always responded with cheerful enthusiasm and striven hard, not only for SDVSMHF, but for the sector as a whole. We are very fortunate to have such a competent and dedicated team of Trustees.

The challenge for the year ahead is to ensure we now carefully build on these foundations and the exciting vision we have been putting in place. The mental health Voluntary & Community Sector working with people across the City and County is really strong and doing some fantastic work. Southern Derbyshire Mental Health Voluntary Sector Forum has a challenging and unique role to play within that. With all of our members' support I am convinced our vision is achievable and **together** we can ensure the sector goes from strength-to-strength.

**Mark Simms**  
**Chair**

## **Executive Committee Membership 2007 – 2008**

---

Mark Simms	Chair	P3 Social Inclusion Charity
Dorothy Lane	Vice-Chair	Amber Trust
Dale Wilkins	Treasurer	P3 Social Inclusion Charity
Audrey Essex		British Red Cross
Lynn Orchard	(to January 2008)	Erewash Mental Health Association
Christine Lawrence		2 Care Trevayler
Kathy Kozlowski		Amber Trust
Rachel Boden	(from June 2008)	Life Matters

## **Staff 2007 – 2008**

---

Angela Kerry	Voluntary Sector Liaison Officer
Jo Birkett	Administrative Officer (to March 2008)
Judith Szénási	CDW Co-ordinator (October 2007 to May 2008)
Cheryl Mason	Administrative Assistant (from April 2008)
Lorna Needham	Administrative and Finance Assistant (from July 2008)

## **SDVSMHF – Organisational Development**

---

During 2006 – 2007 The Forum reviewed the needs of the membership and produced a draft Business Plan. Last year's Annual General Meeting gave us the opportunity to consult our membership on the content of the plan and the useful information gained from this exercise helped to shape the final version of the Business Plan, which was issued in October 2007.

Although the Plan focuses on the services we wish to provide to our members, it also recognises that the organisation itself needs to develop to enable us to deliver.

So, alongside our more visible activities this year, we have been working behind the scenes to do just that!

The most obvious change is that we have moved premises. We moved into our new offices at East Mill in Belper in November 2007. The new facilities have room for five staff, a small meeting space, and a linked computer network for staff.



From this .....



.....to this!

We have also started to review and implement new organisational policies. As a result of our very beneficial involvement in the MaTREA (Mainstreaming the Racial Equality Agenda) Programme we have revised our Equality and Diversity Policy. We have also created a new Fire Safety Policy and Criminal Records Bureau Policy (fully implementing CRB checks for all staff.)

We have begun recruiting to new posts that will strengthen the staff team – a Community Development Worker Trainer and Co-ordinator was appointed, and more recently, two new administrative assistants – one of whom also has a finance role.

One of these appointments has been to replace Jo Birkett, who has been our part-time administrator for the last seven years. We were very sorry to see Jo move on, after seven years' loyal (and cheerful) service to the organisation. We wish her well in her new career in a more "hands-on" caring role.

We now have full-time administration cover in the office for the first time, guaranteeing a real person at the end of the phone to take your calls!

Recruitment will continue in the coming year, and we look forward to having our full staff team in place very soon.

## Partnership Working – Representation

---

After major re-organisation within our statutory partners last year, we had a need to match our representation to the new structures. So, it has been a busy year for voluntary sector elections!

### **Derbyshire Mental Health Services Trust**

Firstly, we were invited to nominate two representatives from voluntary sector providers to the emerging Derbyshire Mental Health Services Foundation Trust, one for Derby City and one for Derbyshire. Elections were held and the two representatives, Wendy Beer from Derbyshire Mind (city) and Kathy Kozlowski from Amber Trust (county) were selected. As it happened they have so far been less than busy in the role, as we patiently awaited confirmation of Foundation status. There was disappointment at the beginning of July as the Trust were not granted Foundation status. We understand though that the application will eventually be re-submitted, and no doubt we will again be invited to provide shadow governors to represent the interests of the voluntary sector.

Once they do acquire it, foundation status will allow the Trust new freedoms to work with and alongside voluntary sector providers, so we look forward to more opportunities for joint working in the future. Meanwhile we will continue to work more informally in partnership where opportunities allow.

### **Locality Mental Health Forums**

Derbyshire County Primary Care Trust has now established three Locality forums, all of which needed voluntary sector representation. Elections have already been held to the South (Amber Valley and Erewash) and West (South Derbyshire, Dales and High Peak) Forums, with plans to also hold a formal election for places in the North Forum (Chesterfield, North East Derbyshire and Bolsover.)

In Derby itself, the Derby City Primary Care Trust Locality Forum remained the same, but we still needed an election to replace a member of staff who had changed job, so we have now worked our way through four major elections inside a year.

All of these Locality Forums feed into the Mental Health Strategic Commissioning Group. Roger Kerry (north) and Angela Kerry (south) remain the representatives there at the current time. However, a review of both the Strategic group and the locality forums is imminent as we go to print, so watch this space, it could all change again shortly!

### **Strategy Groups**

A number of joint agency groups overview major strategy developments in Derbyshire, not least of which is the group responsible for developing the Mental Health Strategy for Derbyshire. Last year the over-arching strategy was approved, so this year work has moved on to more subject-specific planning activity. We have been actively involved in the development of a new **Dual Diagnosis Strategy** (substance use and mental health), including a revised care pathway, and proposed service model. This will result in better clarity about where support can be reached for people who have a dual diagnosis, and will give much needed training to all agencies to enable them to recognise and signpost people to the appropriate service.

A number of sub-groups are starting to arise from the **Community based and primary level services in community settings** section of the Strategy. Work is now being carried out to develop services in four key areas – psychological therapies, workforce, information and care pathways. Psychological therapies in particular will be a key area for development, as it has already been agreed that £1.5 million will be invested in strengthening services in this area - services that could be successfully provided in the voluntary sector as well as in primary care.

A full list of current representatives is given overleaf, as well as a diagrammatic overview of the mental health planning system.

We would like to take this opportunity to thank all our providers who give up their work (or leisure!) time to enable the voluntary sector view to be heard at meetings, and to give commissioners the benefit of our collective, and often extensive, experience in delivering services. The organisations that allow their staff and trustees to represent the sector do so at their own expense, as they receive no specific remuneration or recompense for the time spent on these activities.

### **Current Representatives** (June 2008)

Southern Derbyshire Voluntary Sector Mental Health Forum members are currently representing the voluntary sector on the following groups that are part of the mental health strategic commissioning structure. You can see a diagram of the full meetings structure overleaf.

Derbyshire Mental Health Strategic Commissioning Group	Angela Kerry, Roger Kerry
Derby City Mental Health Forum	Wendy Beer, Kirit Mistry
South Mental Health Forum (Amber Valley and Erewash)	Jean Eckman, Kathy Kozlowski, Lynn Orchard
West Mental Health Forum (South Derbyshire, Derbyshire Dales, High Peak)	Rona Rawson, Judith Morris
Mental Health Strategy Groups (including Psychological Therapies Sub-Group)	Roger Kerry, Angela Kerry, Teddi Carlson
Dual Diagnosis Strategy Groups	Christine Lawrence, Sean Wimhurst, Angela Kerry
Social Inclusion and Employment Group	Angela Kerry
Public Health Sub Group	Angela Kerry
Delivering Race Equality Steering Group	Roger Kerry, Angela Kerry, Kirit Mistry
Older People's Mental Health Commissioning Sub Group	Audrey Essex, Paul Dunnery

We also work closely with Derbyshire Mental Health Services Foundation Trust and are formally represented in their governance structure as follows:

Derbyshire Mental Health Services Foundation Trust Board of Governors	Wendy Beer, Kathy Kozlowski
IDEAL (Integrated Development Education and Learning)	Angela Kerry, Roger Kerry

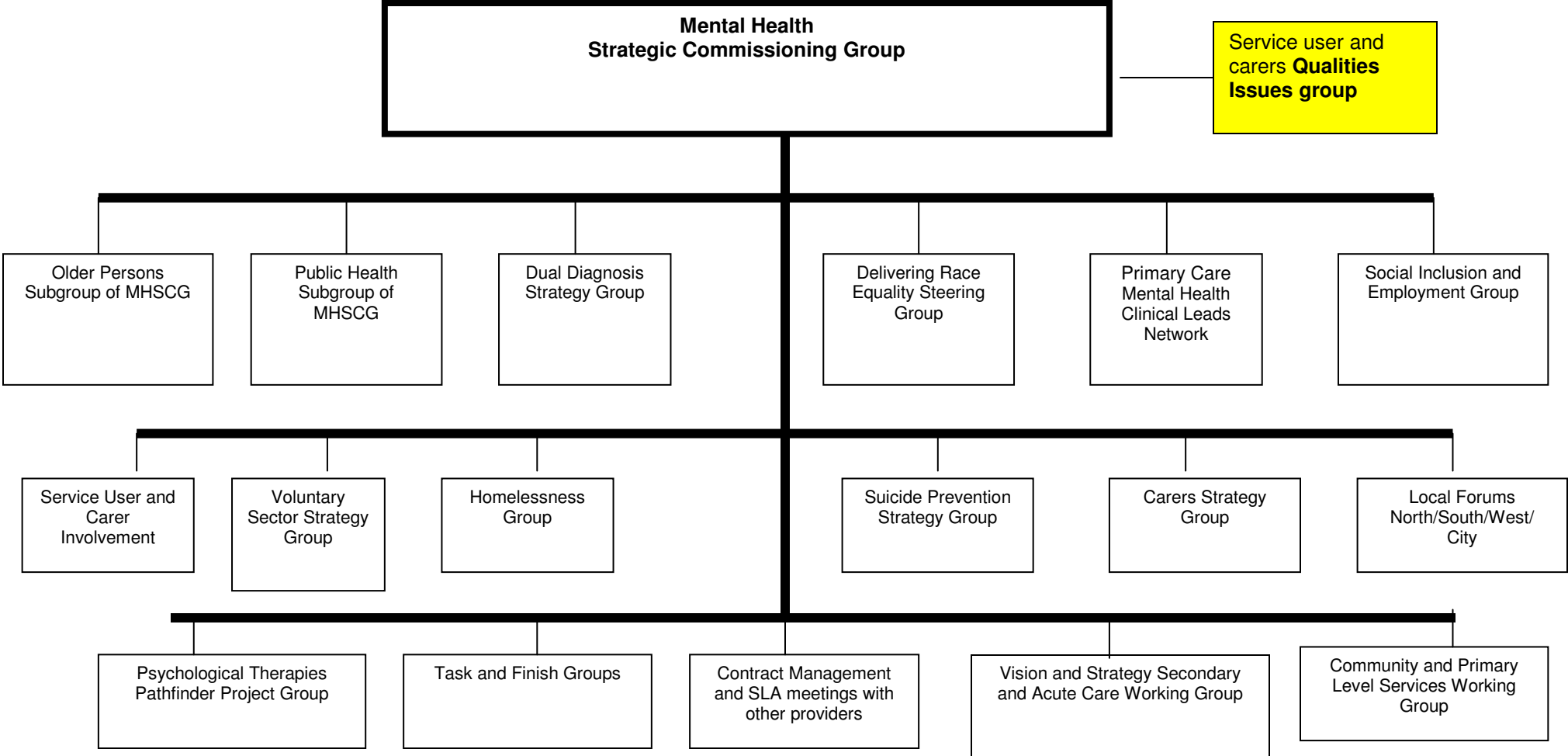
### **Contact your representative**

You may contact any of the Forum representatives through our office. Your message will be forwarded to the appropriate person.

### **Transparency**

The Southern Derbyshire Voluntary Sector Mental Health Forum recognises it can only represent the views of those organisations electing to participate in its activities.

**MENTAL HEALTH COMMISSIONING MEETINGS STRUCTURE**



## Partnership working – policy and practice

---

One of the major reasons for voluntary sector representatives to get involved in the planning system is, of course, to influence policy development at a local level and turn this into positive practice.

The **Voluntary Sector Strategy Group** (VSSG) continues to meet to oversee this for the voluntary sector and to ensure that any developments fit into the wider **Mental Health Strategy** for Derbyshire.

Representation at VSSG is made up of both city and county commissioners responsible for mental health services, the two voluntary sector liaison posts, and the Locality Forum representatives. This ensures a broad membership with experience of the wider planning systems in mental health.

Last year this report highlighted the fact that practice has fallen short of policy around voluntary sector development. Funding has not always followed on from positive discussions about the sector. It is pleasing to report much better news this year.

In 2007 the VSSG supported innovative joint training for providers and commissioners on the principle of incorporating Full Cost Recovery into service delivery and this is now written into all open tenders for new mental health related contracts.

At the time, concern was also expressed about how we might begin to meet some of the difficulties around existing services that fall short of full cost recovery in their funding. We were therefore very pleased when commissioners recognised these difficulties and created a specific pot of recurrent monies to pick up the most obvious shortfalls for organisations who could demonstrate that they were under-funded. Already in 2008 three organisations have benefited from this additional funding – Derbyshire Federation for Mental Health, Derbyshire Voice and Erewash Mental Health Association.

Although the pot of money is limited, it is still possible to make an application for service shortfall through the VSSG group.

Full Cost Recovery of course remains a major issue for organisations, and the Voluntary Sector Liaison Officer has delivered two more training courses this year, funded by the East Midlands Care Services Improvement Partnership.

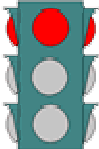
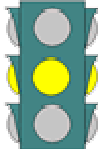

### Funding

We have also had some success with funding for member organisations this year. The **Life Matters** counselling and advice service in Alfreton is an innovative project that delivers both counselling and debt advice under one roof. It was set up with time-limited funding which did not really give the project time to measure and assess the outcomes for people using the service. Mental health commissioners have funded an extension to the project to allow this very important work to be carried out, and to enable the group to look into the possibility of tendering for new work around psychological therapies in primary care.

The **First Steps Edge** eating disorder group is rapidly developing from a self-help organisation into a service provider of eating disorder services. It particularly fills the niche around early intervention at a primary care level but also step-down and support as someone recovers from severe illness. The group is well respected and their advice is often sought from statutory services. An application has been made to support core funding for the organisation from 2009 onwards, and this approach has given commissioners time to work with the organisation to ensure that their role in the care pathway for eating disorders is both timely and relevant.

It is two years since **Cruse Bereavement Care** highlighted their work in our Annual Report and commented on the frustration they felt that, whilst their work was well-respected and valued by statutory partners, their attempts to secure sustainable funding for their project in southern Derbyshire had been fruitless. Well, we persisted in highlighting their cause to commissioners and it was with great relief towards the end of last year that we finally succeeded in our efforts, and our attendance at the launch of their new Derby base, made possible by the new core funding, in April this year was a real delight.

We were also pleased to hear that Derbyshire Mind had secured funding for their “**Enjoying Derby**” walking project, which we had assisted in drawing up. The development will soon be operating in the city as part of the national “Moving People” Big Lottery programme and will involve several partner agencies from the voluntary mental health sector.

<b>RED</b>	<b>AMBER</b>	<b>GREEN</b>
		

Perhaps the most unexpected, but potentially exciting, policy development this year came in the form of the Government’s **self-assessment criteria for mental health**. In previous years Derbyshire has always been able to declare itself “green” in the traffic lights rating system with regards to the voluntary sector, as the criterion has focussed on voluntary sector involvement in planning (which is excellent) and ‘significant’ investment in voluntary sector services. As no figure was ever given the term ‘significant’ could be interpreted quite leniently! This year the criterion has replaced that word with an actual target figure, the amount of which is quite staggering - 15% of total mental health investment should be into services provided by the sector. This has turned us from green to red on the indicator overnight.

In some ways this is a shame, because this very stark system of assessment leaves us with no way of acknowledging the very positive aspects of commissioner/voluntary sector working in the county as we have detailed above. But it does present us with a significant opportunity to lobby for open procurement of new and existing services and then to tender for these services.

Of course, it is still our place to ensure that any services we operate deliver the best outcomes for the people who use them as well as genuine value for money and the opportunity for commissioners to tick those boxes!

**Partnership Working – Fit For Purpose**

One year on from the publication of our Fit For Purpose research, we have begun to implement some of the recommendations of the research through discussion at the Voluntary Sector Strategy Group. It was always acknowledged that to really make a significant impact, though, we would need additional resources.

We are therefore very pleased to announce that we have secured funding - in true partnership style - to employ a part time Training and Development Officer for a period of two years. Amber Trust, the local voluntary sector service provider, and Derbyshire County Primary Care Trust have each given us £25,000 towards the cost of the post, and we will also utilise around the same amount from our reserves to meet the budgeted costs.

The work will focus on development support for small, local providers as stipulated by Amber Trust, and on training around modernisation and policy requirements as required by the PCT. We are delighted that both our statutory and voluntary sector partners agree that the sector is worth the investment, and are very much looking forward to running the project, which we are sure will benefit all of our member organisations.

**Partnership Working – Equality and Diversity**

The funding for the remaining **Delivering Race Equality** Community Development Workers came online during 2007. We appointed our own trainer-co-ordinator, who helped to bring together the November DRE conference and compiled the conference report. We also ran a workshop for CDW Managers, and assisted the CDW employers to recruit to all the CDW posts. Work is currently underway on developing the work plans for CDWs and in the next twelve months our work will focus on delivering training, both to the CDWs and to the Mental Health Services Trust.

We also worked with Chesterfield and North East Derbyshire Links and Churches Together to **review equality and diversity** across infrastructure providers in Derbyshire, compiling a report with recommendations for “equality-proofing” of all new infrastructure projects, and submitting a draft equality and diversity policy for the Derbyshire infrastructure consortium (now known as 3D.)

### Service Modernisation

Whilst the injection of new funds into training and development is most welcome, we have continued to work within existing resources to deliver in some key areas with commissioners and member organisations during the year. In particular we have focussed upon delivering **outcomes training** to organisations that provide day or similar services for people with mental health problems.

General training on the topic led to members asking for a more focussed approach on a particular outcomes model, and in April we were pleased to work through commissioners and the Care Services Improvement Partnership to offer training from the National Development Team on the Social inclusion “web”.



Caught up in the web – outcomes training being delivered by NDT!

This training has evaluated very positively, and at least two of the organisations concerned are already implementing the model with staff and service users. . As we continue to work through a time of review and re-rendering of “day” services which concentrate on measuring outcomes for people using the service, this work has been really welcomed by those organisations involved.

We have also been involved in creating and supporting the **Derbyshire Contracts Advice Network**, alongside other infrastructure organisations in Derbyshire. This project submitted a successful application to the Big Lottery “Basis” fund, and is now working with several members to develop their capacity and readiness to respond to contracting opportunities in Derbyshire. The project will advise on technical issues such as TUPE, full cost recovery, environmental analyses, as well as specific tendering techniques.

This report is just a brief round-up of the work of SDVSMHF in what has been our busiest year to date. We look forward to the challenges of the next twelve months as we continue to work to represent the sector and to provide services that meet your development needs.

## Forum Focus - Busy Market Place!

---

On 22<sup>nd</sup> January we held a special meeting of the Forum with a Market-Place theme. The idea was to give our member organisations the opportunity to find out more about each other and the work that they do. The event was the idea of one of our newest members, but it was taken up with enthusiasm by many other organisations, both large and small.

On the day, we all squeezed into a room at St James Centre in Derby, along with display boards, leaflets, videos, pens, key-rings and just about any other promotional material you can think of!

Although there was little formal organisation, people seemed to get the hang of the networking very quickly, and it was a very busy and productive afternoon, as people caught up on service development and change across the sector.

Below is a selection of pictures that capture the spirit of the event.



Networking



A selection of displays



Stand-up networking – SDVSMHF, Derby Millennium Network, Derby Racial Equality Council



Sit down networking – Red Cross, Alzheimer's Society, Derby and Burton Cruse



Ready for business – Step Forward please!



An Amber Valley cluster! – AVCVS, The Croft (Rethink), Amber Trust



What's the next move – new premises perhaps? Erewash Mental Health Association